

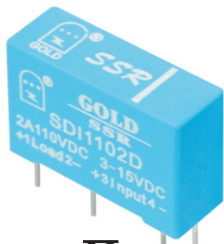


- 1、PCB单列直插式固态继电器
- 2、LED输入状态指示

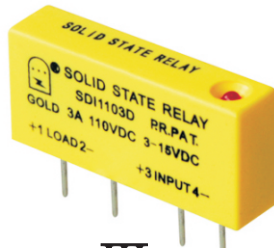
单列直插式DC固态继电器 DC SSR of Single In-Line				产品认证 CE	
产品型号 Type	SDI1102DS	SDI1102D SDI1103D SDI1104D SDI1105D	SDI3003D SDI3005D	SDI4005D SDI4008D SDI4010D	SDI1605D SDI1608D SDI1610D SDI1615D
主要技术参数 Main parameters					
负载电压 Load voltage	12-110VDC		12-300VDC	12-400VDC	12-160VDC
负载最大电流 Max Load current	2A, 3A, 4A, 5A		3A, 5A, 8A, 10A		5A, 8A, 10A, 15A
负载最小电流 Min Load current	0.06A	0.10A	0.10A		0.10A
隔离最小电压 Min Isolation bet.In & case	2000VAC				
绝缘最小电压 Min Isolation to case	2000VAC				
控制电压 Control voltage	3-15VDC		15-28VDC		
控制电流 Control current	6-25mA				
关断电压 Drop out voltage	1VDC		10VDC		
输入阻抗 Nominal input impedance	390Ω, 2000Ω				
通态最大压降 Max Turn-on voltage	<1.3VDC				0.5/0.2/0.1/0.08VDC
断态最大漏电流 Max Off-state leakage	1mA				
电压最小上升率 Min Off-state dv/dt	500V/uS				
通断时间 On or off time	2ms				
动作状态指示 Status indicator	无		LED 红色		
工作环境温度 Operating temperature	-40 ~ 80 °C				



I



II



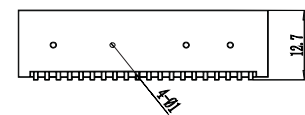
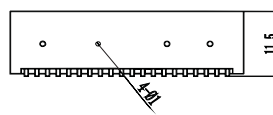
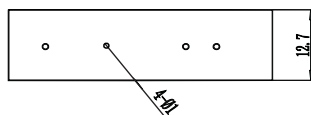
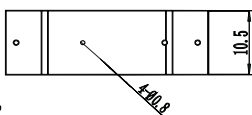
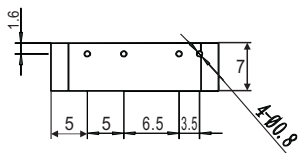
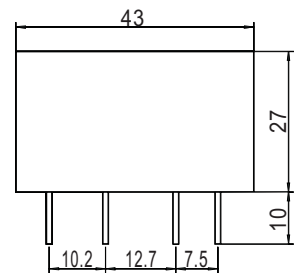
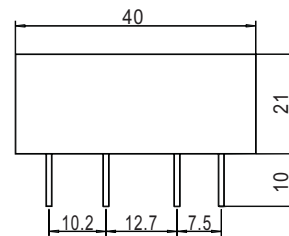
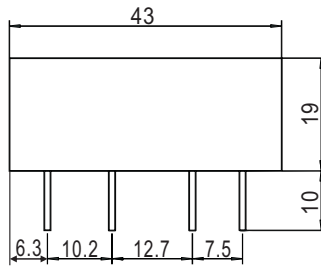
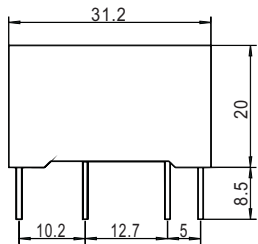
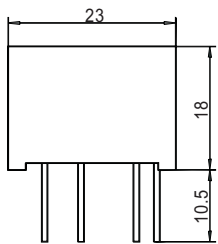
III



IV



V



外形尺寸: mm